

CERTIFIED RECORD OF LAND CORNER MONUMENTATION

Z-19

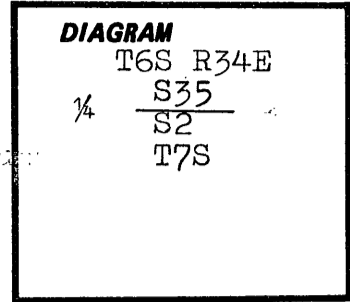
History of original corner establishment:

Corner was set by Frank W. Campbell in 1883 under Contract No. 468, Dated April 12, 1883.

Set a basalt stone, 15" X 12" X 6", 10" in the ground, marked 1/4 on North face.

A Pine, 8" diam., brs. N.13°E., 40 lks., marked 1/4SBT.

A Pine, 10" diam., brs. S.76°E., 214 lks., marked 1/4SBT.

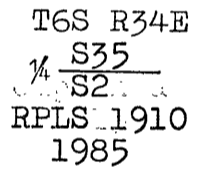


Description of corner evidence found:

Nothing.

Description of monument and accessories established to perpetuate the original location of this corner:

Set Corner at proportionate measure. Set a 2 1/2" diam. alum. cap in a 2 1/2" X 30" alum. pipe at Corner and raised a stone mound. Cap marked per sketch. Set steel posts with attn. & mon. signs attached, 4'± E.&W..



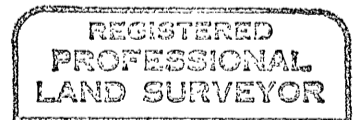
12" D.B.H. White Fir, N.83°W., 28.8', scribed 1/4S35BT.

6" D.B.H. Douglas Fir, S.10°E., 32.8', scribed 1/4S2BT.

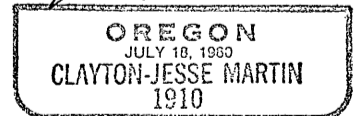
Set a brass washer marked RPLS 1910 between B&T on each B.T., set attn. signs, B.T. tags, painted bands and blazes red.

Distances from Corner to B.T.'s. are to center of tree 1 foot above root crown.

Bearings are magnetic with 20° East declination.



Clayton J. Martin



C.J. MARTIN SURVEYING
2751 JUNIPER ST.
SWEET HOME, OR 97386

Office of Surveyor County of Grant
State of Oregon, I hereby certify that the within instrument was filed in this office
for record on the 31 day of Dec, 1986
Robert D. Baggett by _____
(COUNTY OFFICIAL) (DEPUTY)

See MOS #909